



Cheraw Community Meeting

PCB Investigation
November 2, 2016



Presentation Topics

Why We Are Here

- To share how this started
- What we know so far
- Talk about next steps
- Get your input and thoughts



South Carolina Department of Health and Environmental Control
Healthy People. **Healthy Communities.**

How It Started



South Carolina Department of Health and Environmental Control
Healthy People. Healthy Communities.

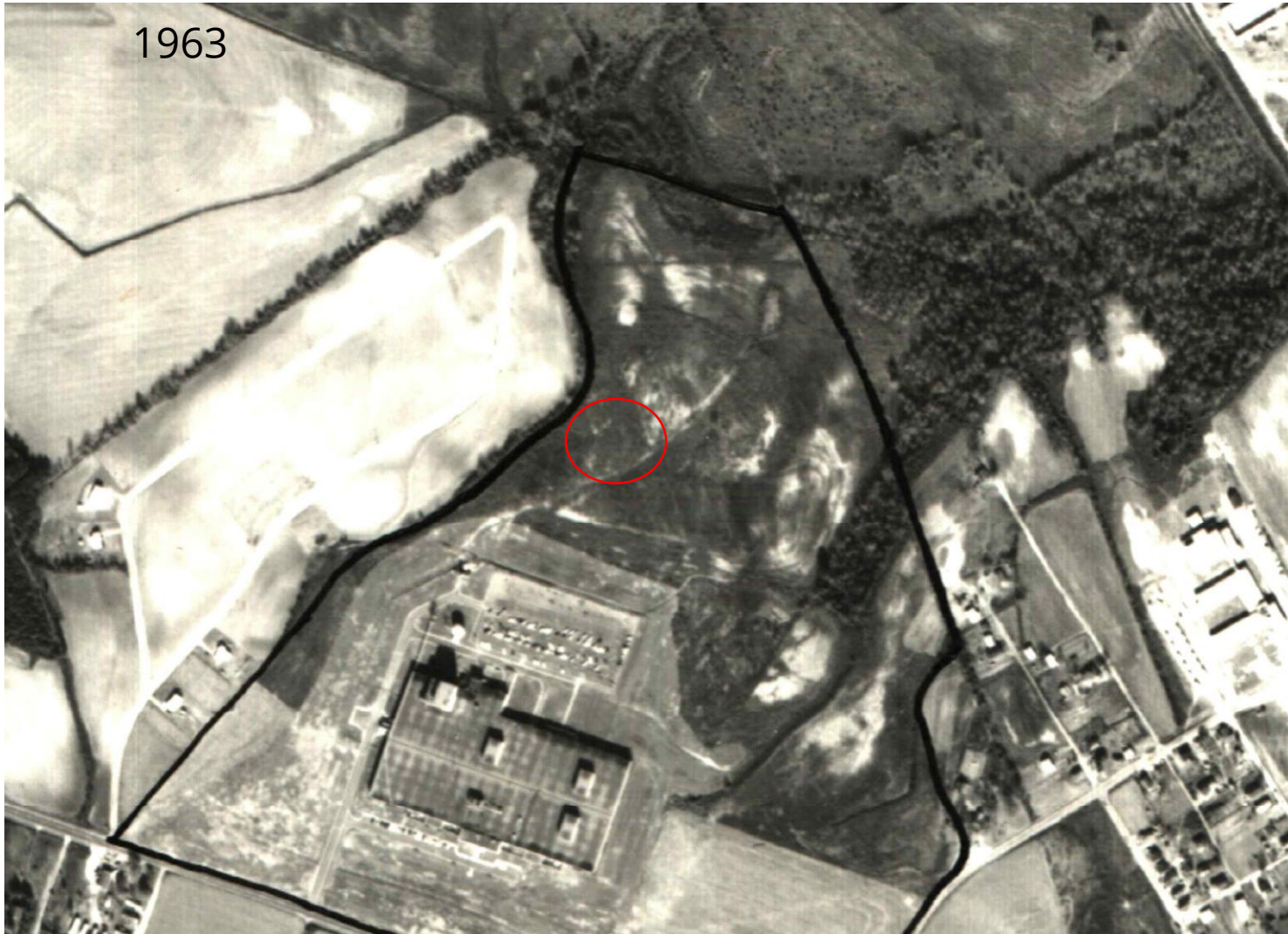




South Carolina Department of Health and Environmental Control
Healthy People. Healthy Communities.



1963



1981

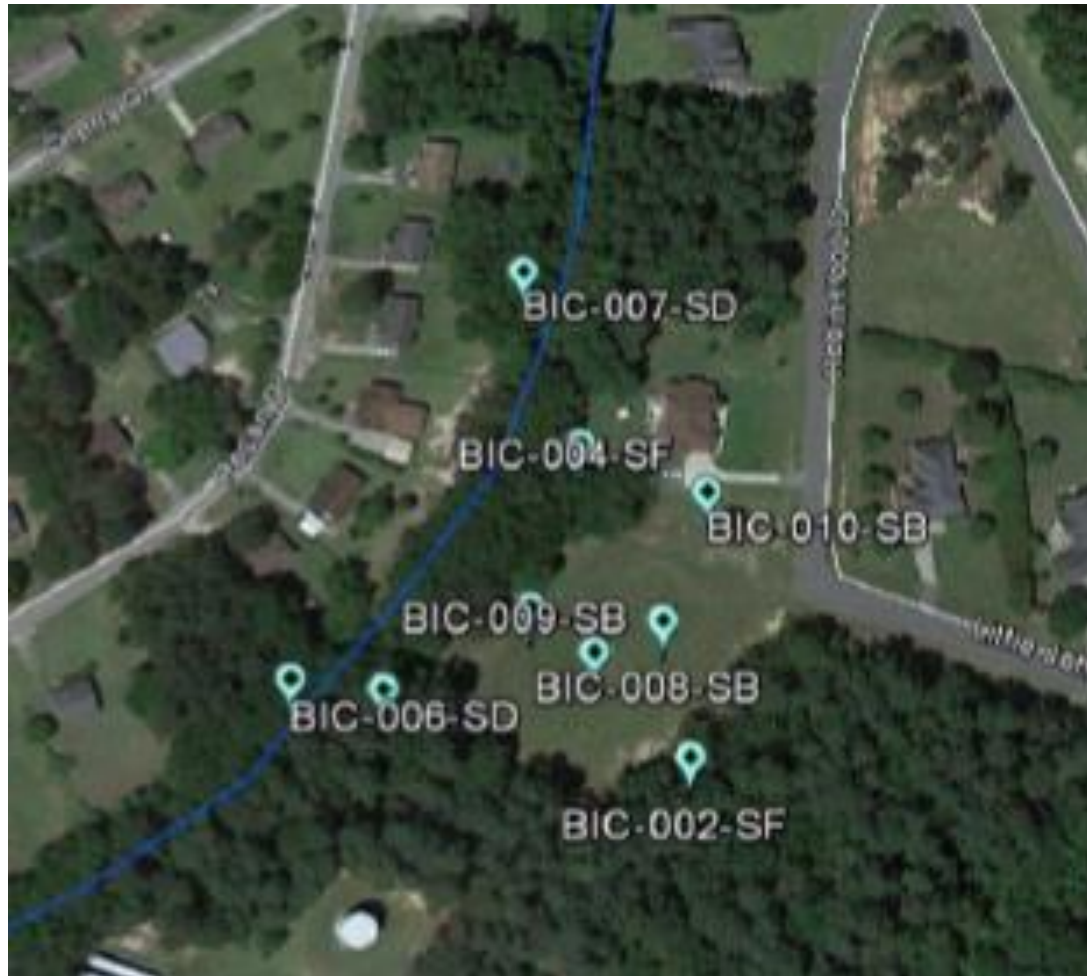




South Carolina Department of Health and Environmental Control
Healthy People. Healthy Communities.



Sampled 2/2016
Results 4/2016

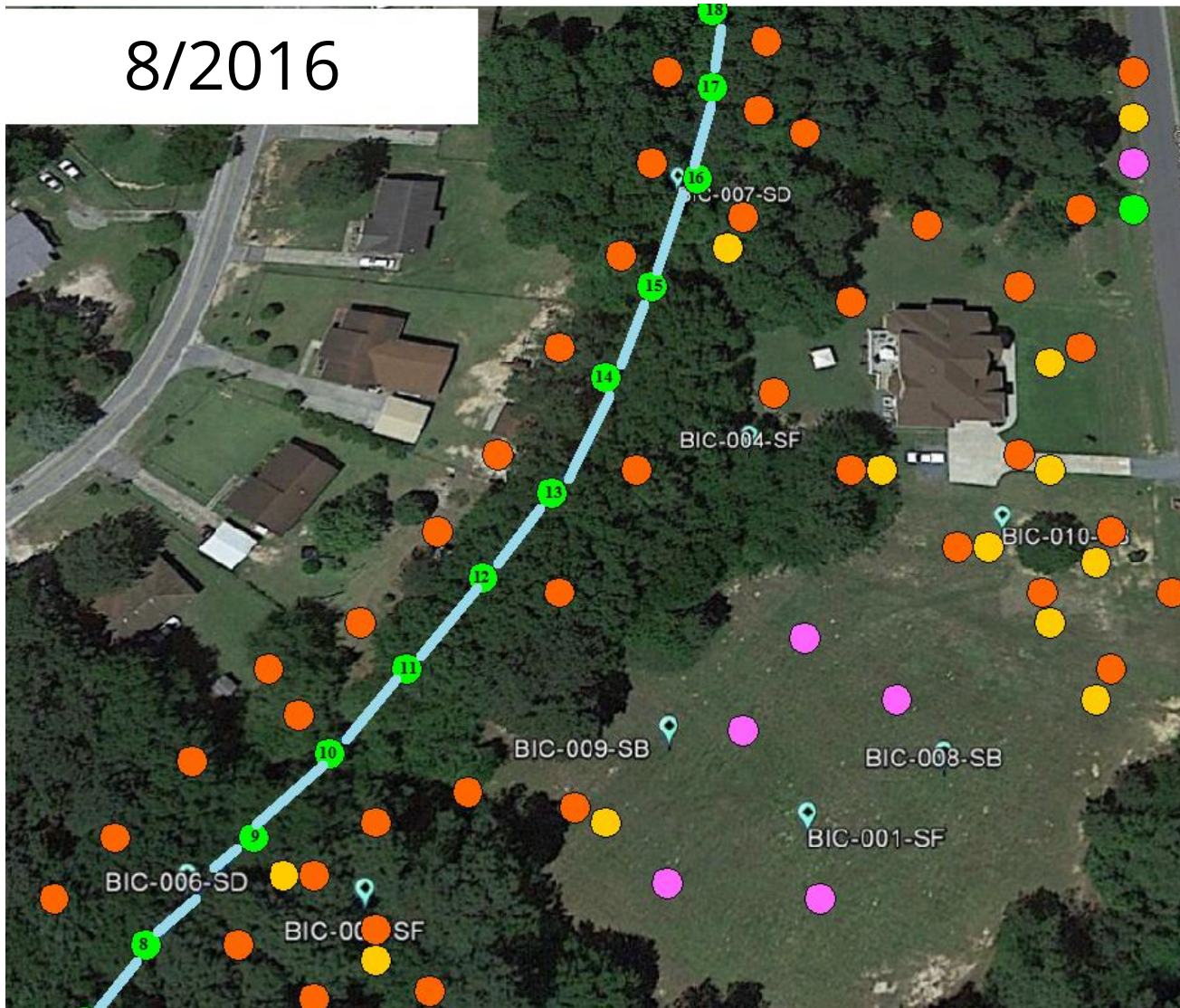




South Carolina Department of Health and Environmental Control
Healthy People. **Healthy Communities.**

What Happened Next

8/2016

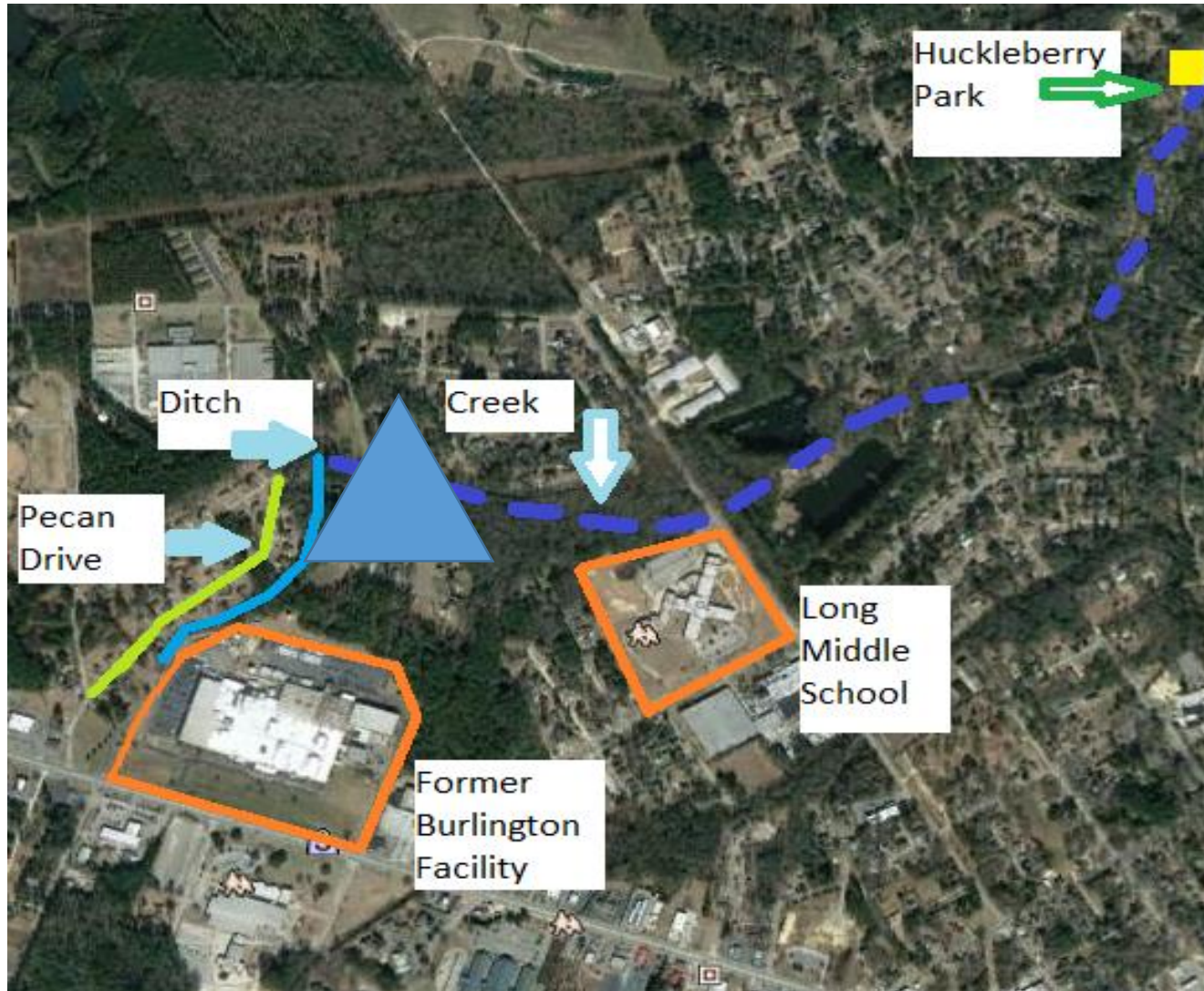


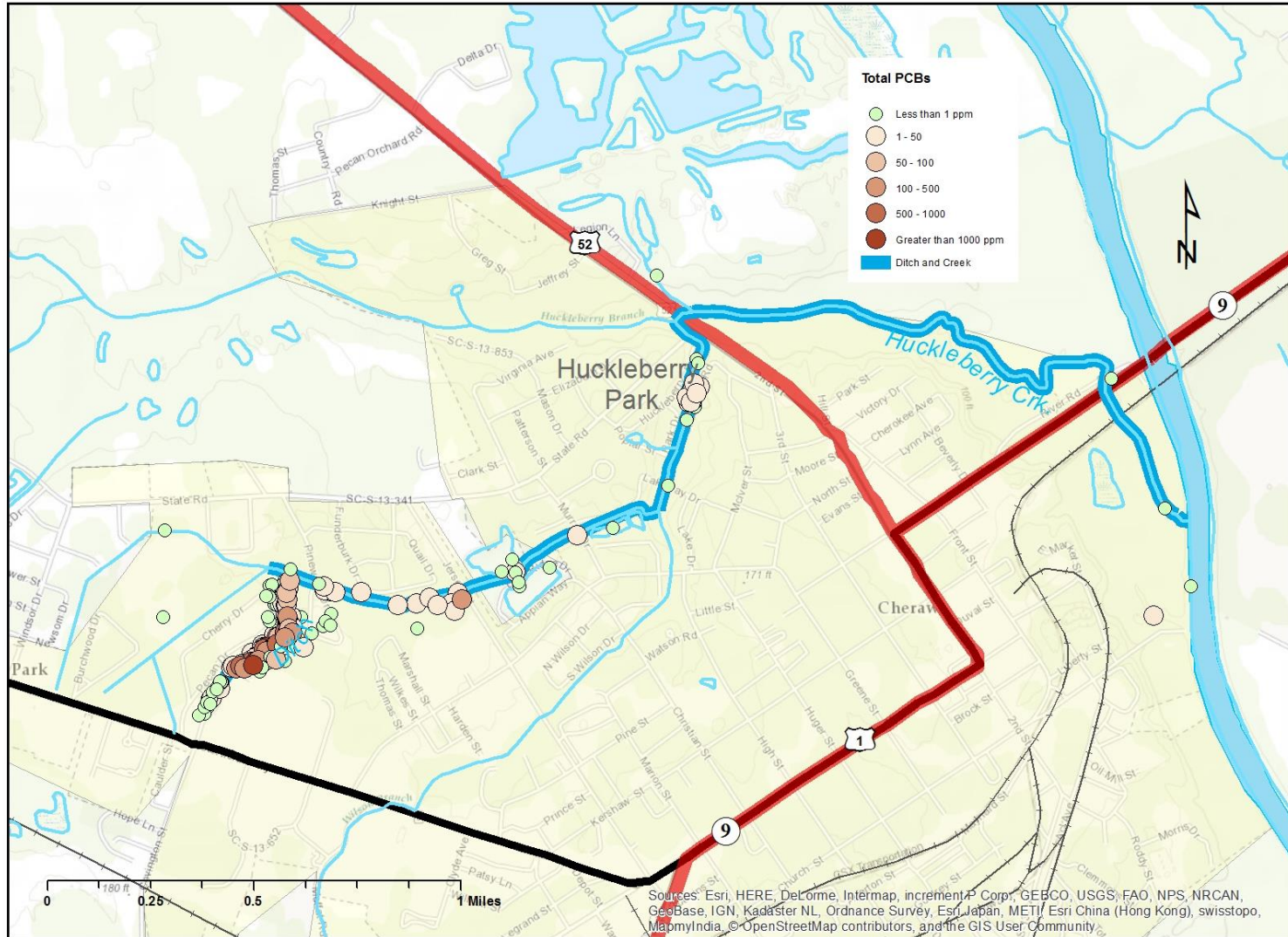
Drainage Ditch





More Sampling





Huckleberry Park



What Do the Results Tell Us?

- Results and limited documentation suggest PCB's were in waste discharges that went directly to the ditch in the 1960's.
- Waste sludge was deposited into 6 drying beds from about 1973 to about 1980. No data ever presented to show PCB's were in the waste.
- Sludge drying beds were excavated in 1989.
- No evidence of PCB's in any of this waste until this investigation.

What are PCBs

- **Polychlorinated Biphenyls**
- **A group of 209 synthetic organic chemicals**
- **EPA Classifies PCB's As a Probable Human Carcinogen**
- **A Residential Screening Level 1 ppm is used to direct the investigation**

What are PCBs

- **No smell or taste**
- **They adhere strongly to soil and sediment**
- **Produced in US 1930-1979, then banned.**
- **Very stable and persistent in the environment**



Our Response So Far



As of Today

- **Collected over 300 soil and sediment samples**
- **Notified property owners and local officials of findings by phone and mail**
- **Notified Takata-Highland plant**
- **Requested assistance of US EPA**
- **The Town closed Huckleberry Park**

As Today

- **Scheduled this meeting**
- **Sent letters to 95 property owners/residents along the creek**
- **Set up a web site for this area to keep you informed:**
<http://www.scdhec.gov/CherawPCBInvestigation>



South Carolina Department of Health and Environmental Control
Healthy People. **Healthy Communities.**

Next Steps



SC DHEC Goals: Next Few Weeks

- **Additional Sampling**
 - Yards near Creek
 - Yards near Ponds
- **Sharing Information**
 - Keep Web Site Updated
 - Property Owners
 - US EPA

SC DHEC Goals: Next Few Months

- **Address the contamination in**
 - Yards
 - Sediment
 - Park
- **Work With**
 - USEPA
 - Responsible Parties

To develop appropriate clean up actions



South Carolina Department of Health and Environmental Control
Healthy People. **Healthy Communities.**

How You Can Help

Ways to Help

- **Continue to stay out of Huckleberry Park**
- **Warn others to avoid the park**
- **Let us know if the creek floods your yard**
- **Avoid floodwaters from creek**
- **Do not disturb contaminated soil on your property**
- **Information about Burlington and its operations during the 1960's and 1970's**



Contact Us

JUDY CANOVA

(803) 898-0816

LEIGH PLUMMER (Florence Office)

(843) 661-4825

Stay Connected



scdhec



@scdhec



blog.scdhec.gov



scdhec



S.C. Department of Health and Environmental Control





Questions?
Comments?

